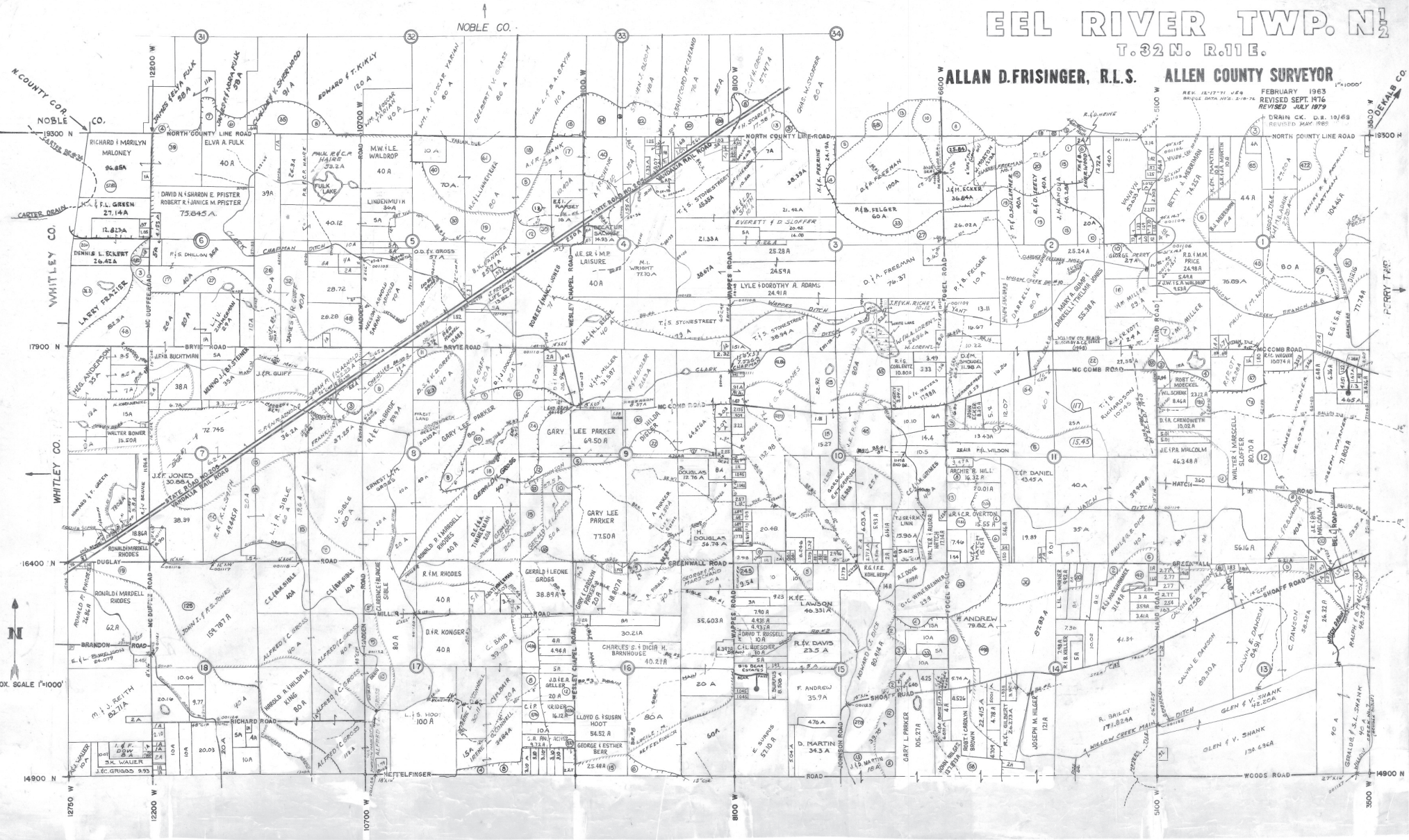


EEL RIVER TWP. N1/2

T. 32 N. R. 11 E.

ALLAN D. FRISINGER, R.L.S. ALLEN COUNTY SURVEYOR

REVISED JULY 1979
REVISED SEPT. 1976
FEBRUARY 1963
DRAIN C.K. D.S. 10169
REVISED MAY 1965



APPROX. SCALE 1"=1000'

WHITLEY CO.
NOBLE CO.
DEKALB CO.