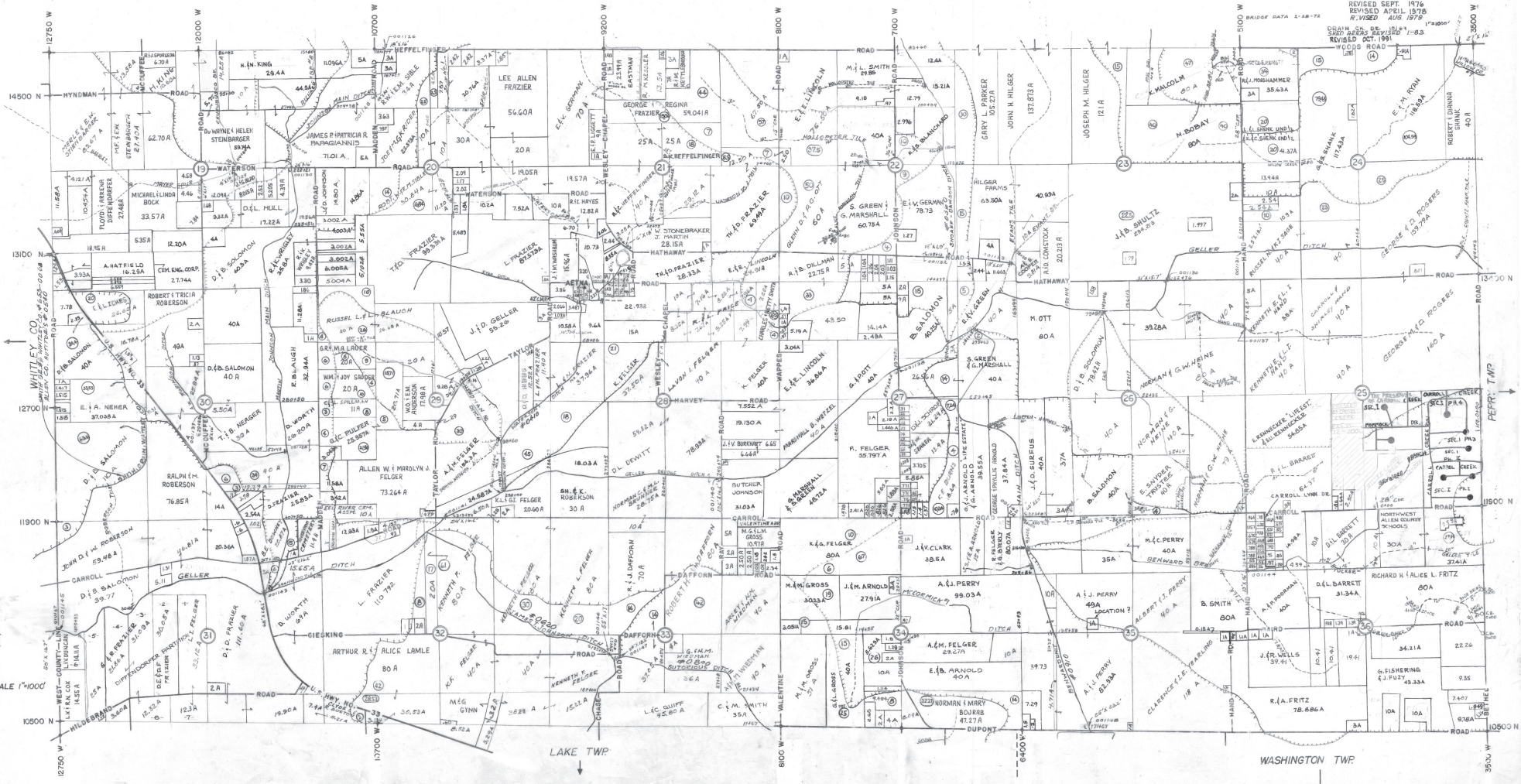


EEL RIVER TWP. S 1/2

T. 32 N. R. 11 E.

ALLAN D. FRISINGER, R.L.S. ALLEN COUNTY SURVEYOR

MARCH 1983
REVISED SEPT. 1976
REVISED APRIL 1978
REVISED AUG. 1979
REVISED OCT. 1991



APPROX. SCALE 1"=400'

LAKE TWP

WASHINGTON TWP

FERRIS TWP