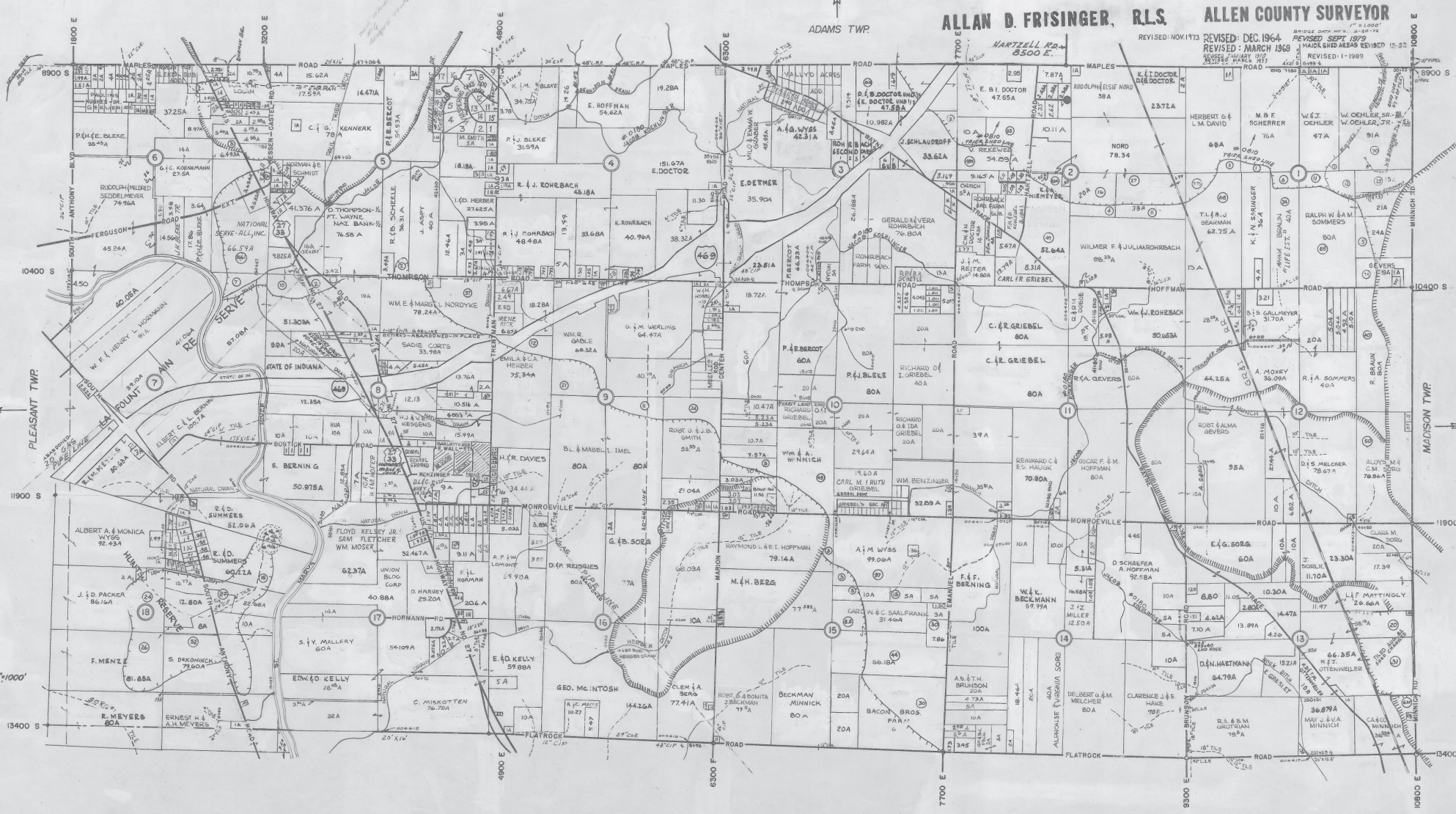


# MARION TWP. N12 T.29N. R.13E.

ALLAN D. FRISINGER, R.L.S. ALLEN COUNTY SURVEYOR

REVISED: NOV. 1973  
REVISED: DEC. 1964  
REVISED: MARCH 1969  
REVISED: W. 1-1969



APPROX. SCALE 1"=1000'