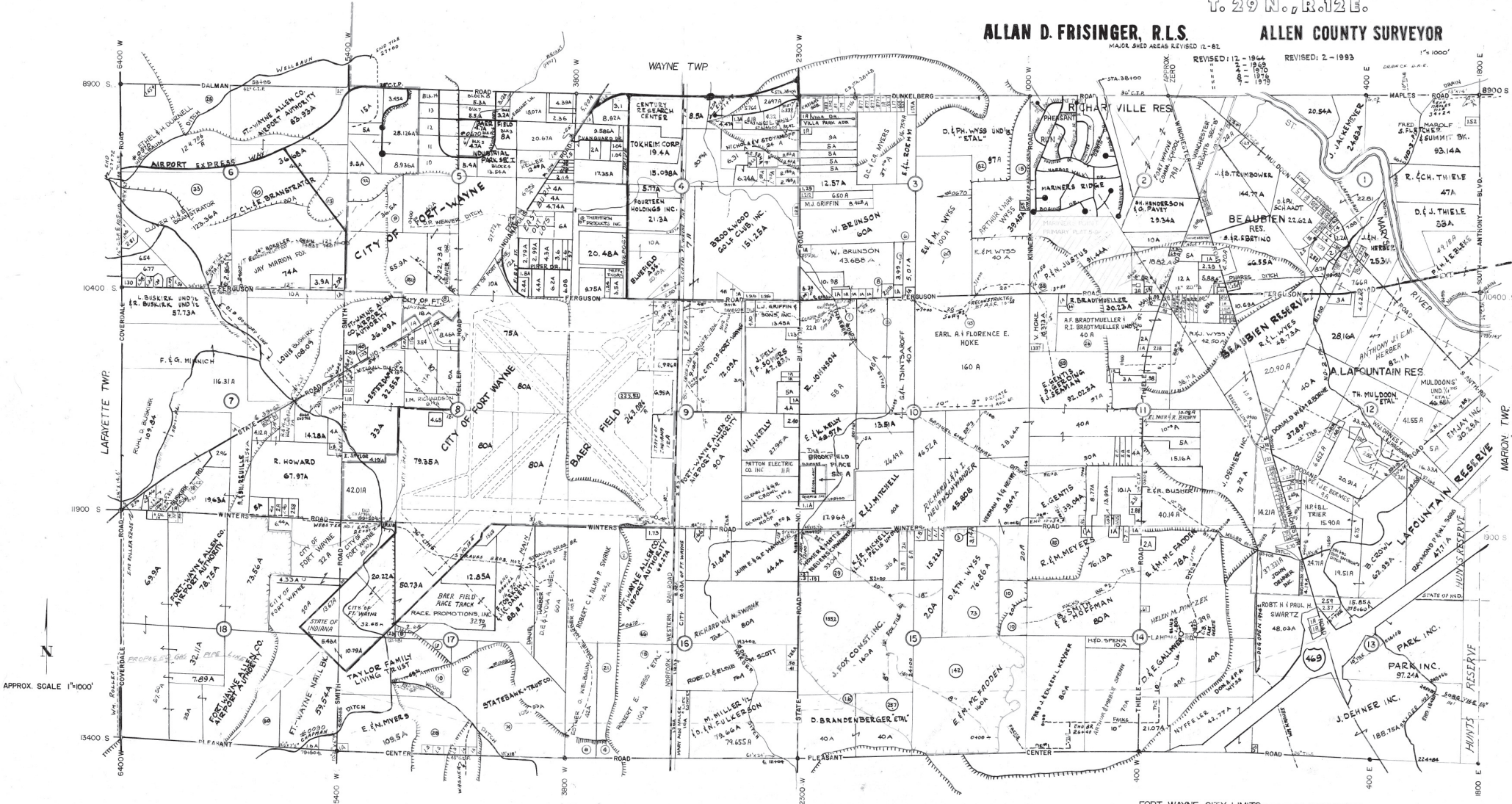


PLEASANT TWP. N1/2

T. 29 N., R. 12 E.

ALLAN D. FRISINGER, R.L.S. ALLEN COUNTY SURVEYOR

MAJOR SHED AREAS REVISED 12-82
REVISED: 12-1964
REVISED: 2-1993
1"=1000'



FORT WAYNE CITY LIMITS