

ADAMS TWP. N 1/2

T. 30 N.

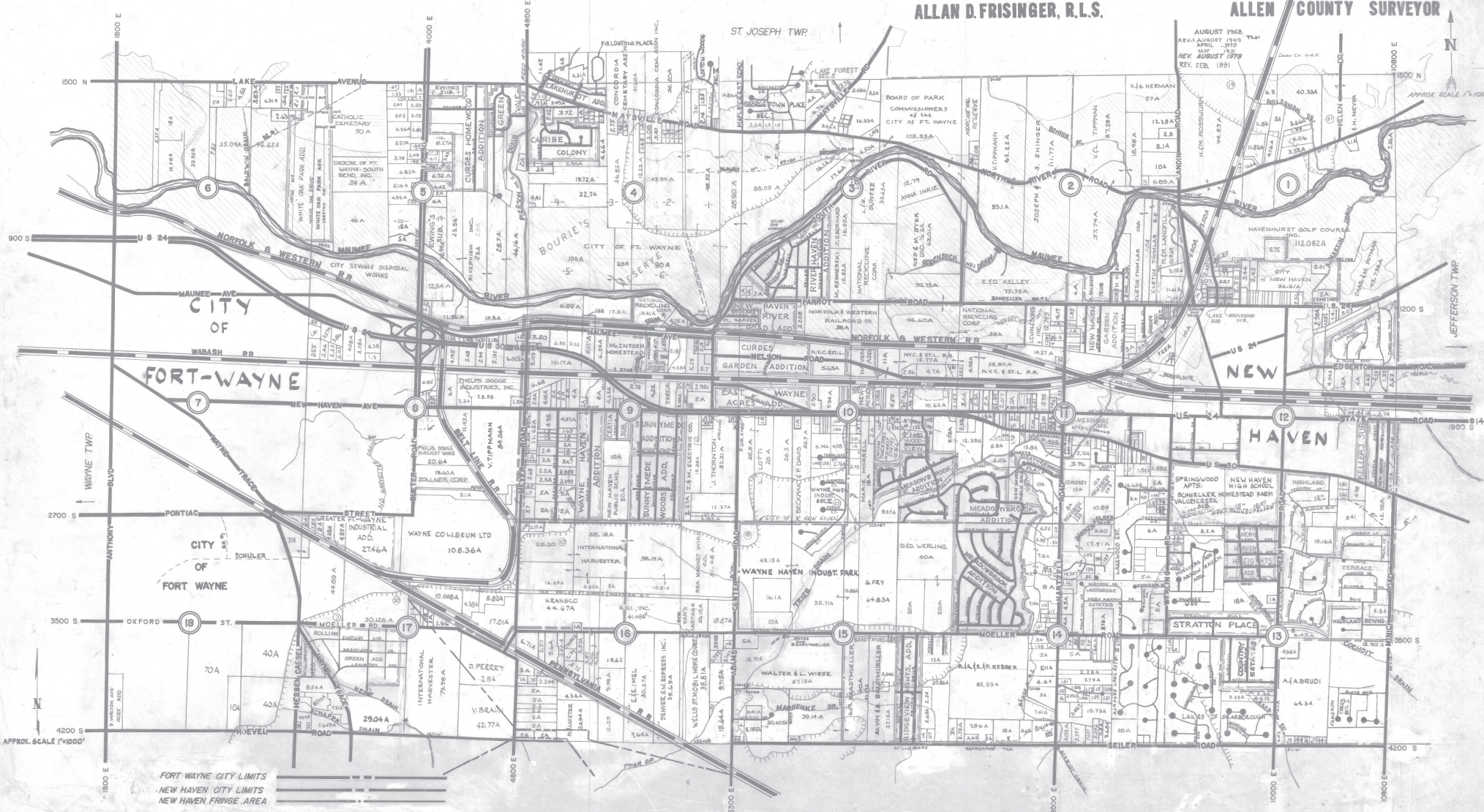
R. 13 E.

ALLAN D. FRISINGER, R.L.S.

ALLEN COUNTY SURVEYOR

AUGUST 1968
REV. 1 AUGUST 1969
APRIL 1970
REV. AUGUST 1979
REV. FEB. 1991

APPROX. SCALE 1"=1000'



FORT WAYNE CITY LIMITS
NEW HAVEN CITY LIMITS
NEW HAVEN FRINGE AREA