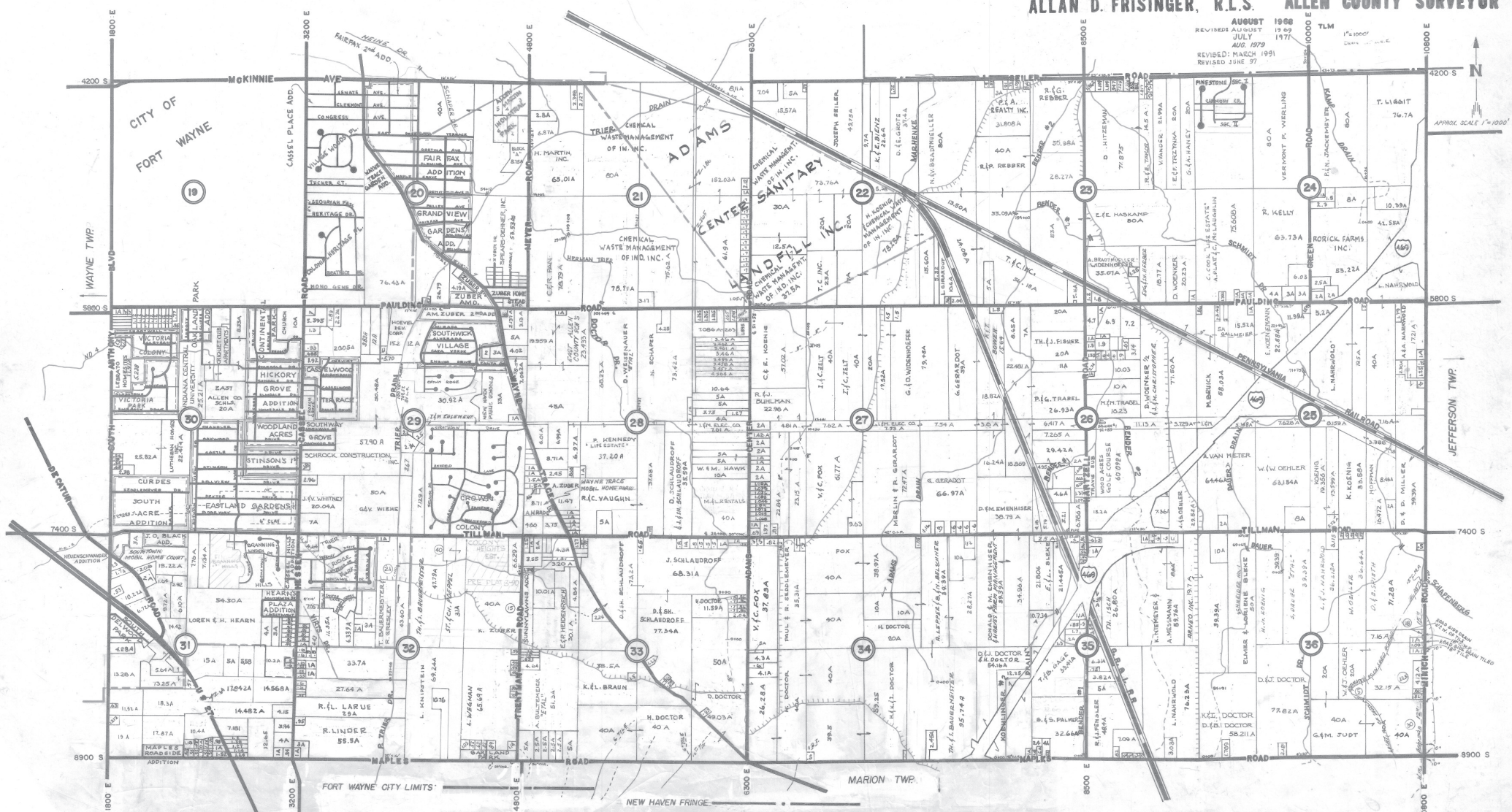


# ADAMS TWP. S 1/2

T. 30 N. R. 13 E.

ALLAN D. FRISINGER, R.L.S. ALLEN COUNTY SURVEYOR

REVISED AUGUST 1988  
REVISED JULY 1989  
REVISED MARCH 1991  
REVISED JUNE 97



APPROX. SCALE 1"=1000'