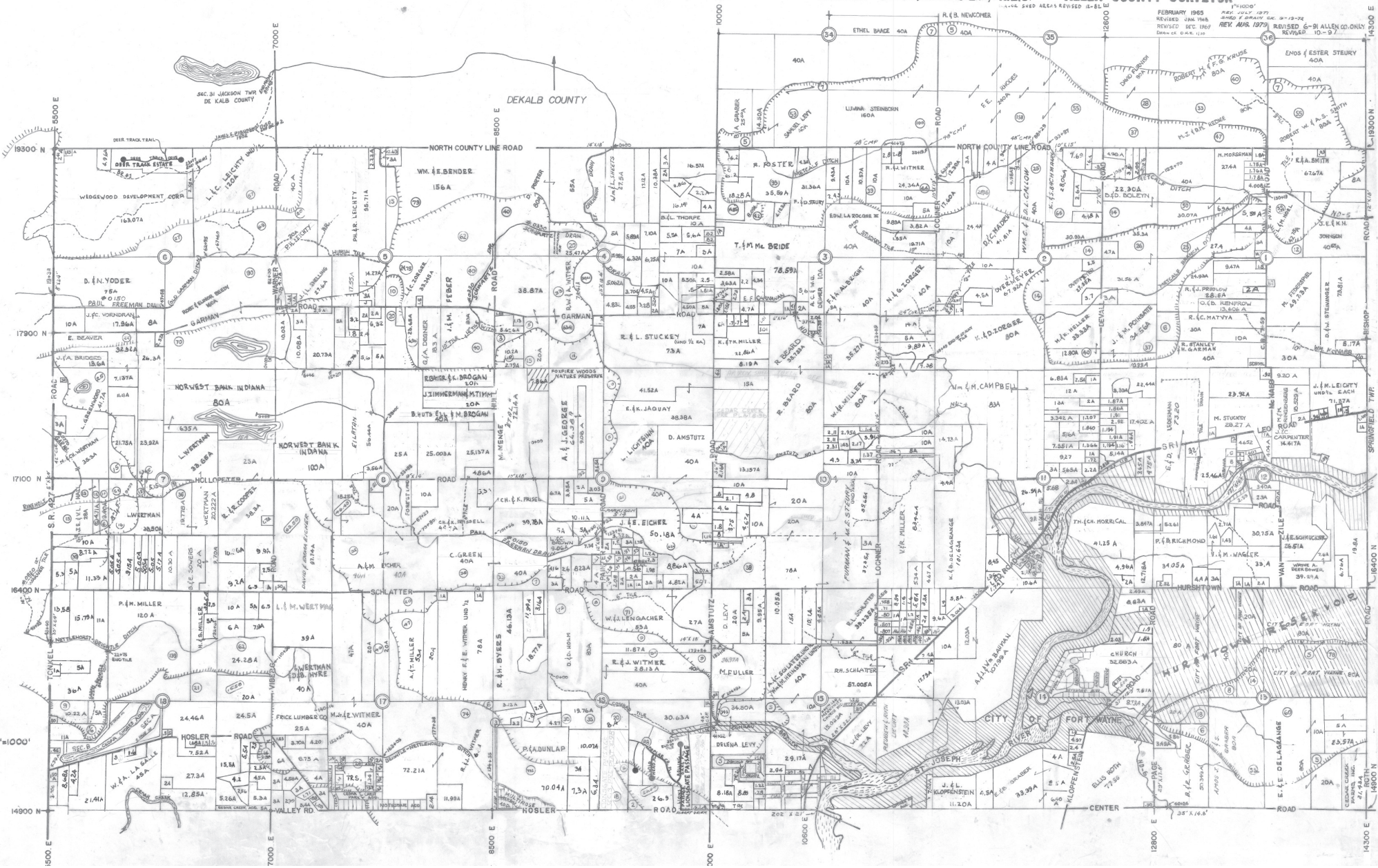


CEDAR CREEK TWP. N¹/₂

T.32N. R.13E.

ALLAN D. FRISINGER, R.L.S. ALLEN COUNTY SURVEYOR

FEBRUARY 1965
REVISED JAN 1968
REVISED DEC 1969
REVISED 10-9-71
REVISED 6-31 ALLEN CO. ONLY
REVISED 10-9-71



PROX. SCALE 1"=1000'

14900 N
14800 N