

# JEFFERSON TWP. N. 1/2

T. 30 N. R. 14 E.

ALLAN D. FRISINGER, R.L.S. ALLEN COUNTY SURVEYOR

FEBRUARY 1967-APR. 1970

REVISED JAN. 69

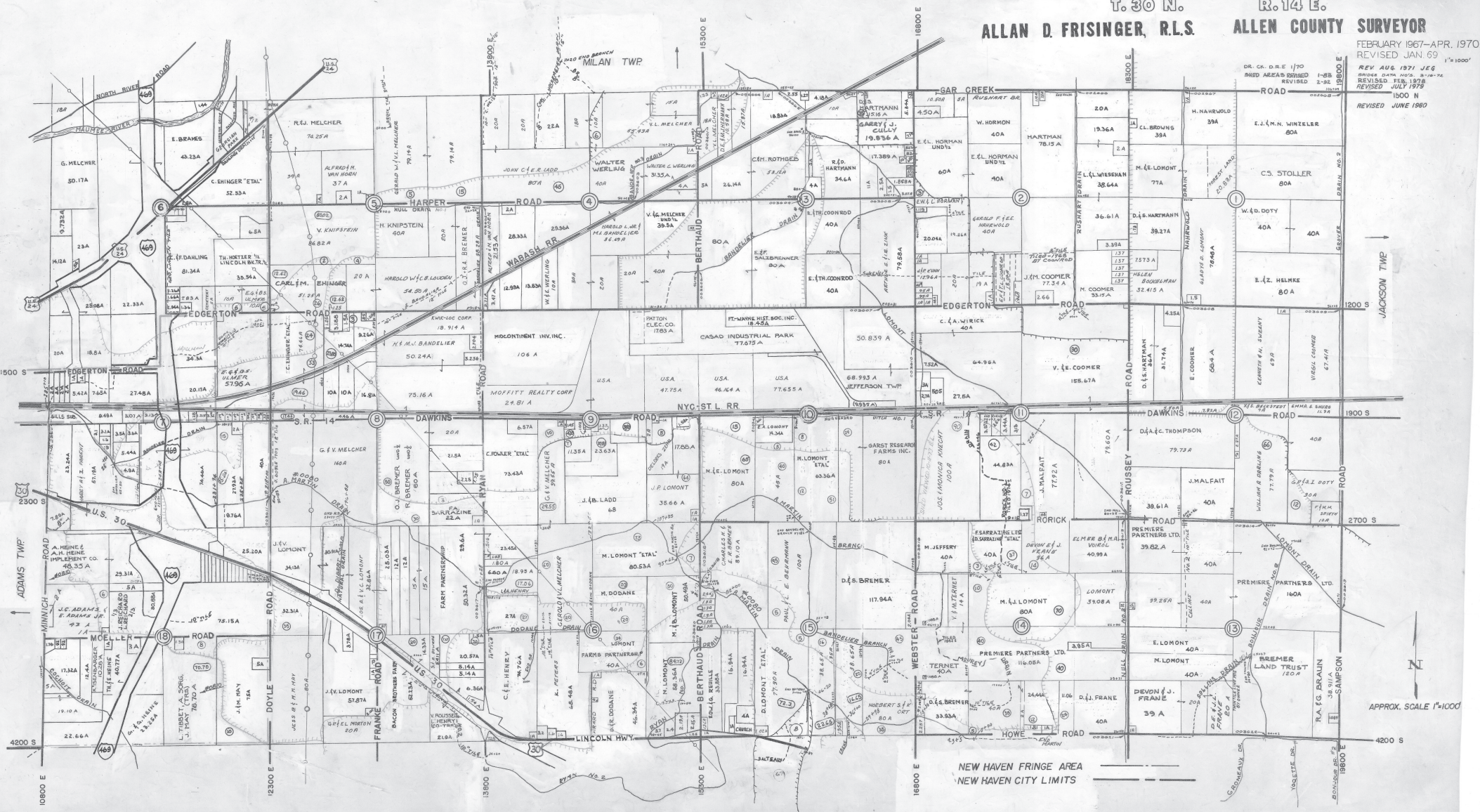
REV. AUG. 1971 JEG

REVISED FEB. 1978

REVISED JULY 1978

REVISED JUNE 1980

1" = 1000'



NEW HAVEN FRINGE AREA  
NEW HAVEN CITY LIMITS

APPROX. SCALE 1"=1000'