

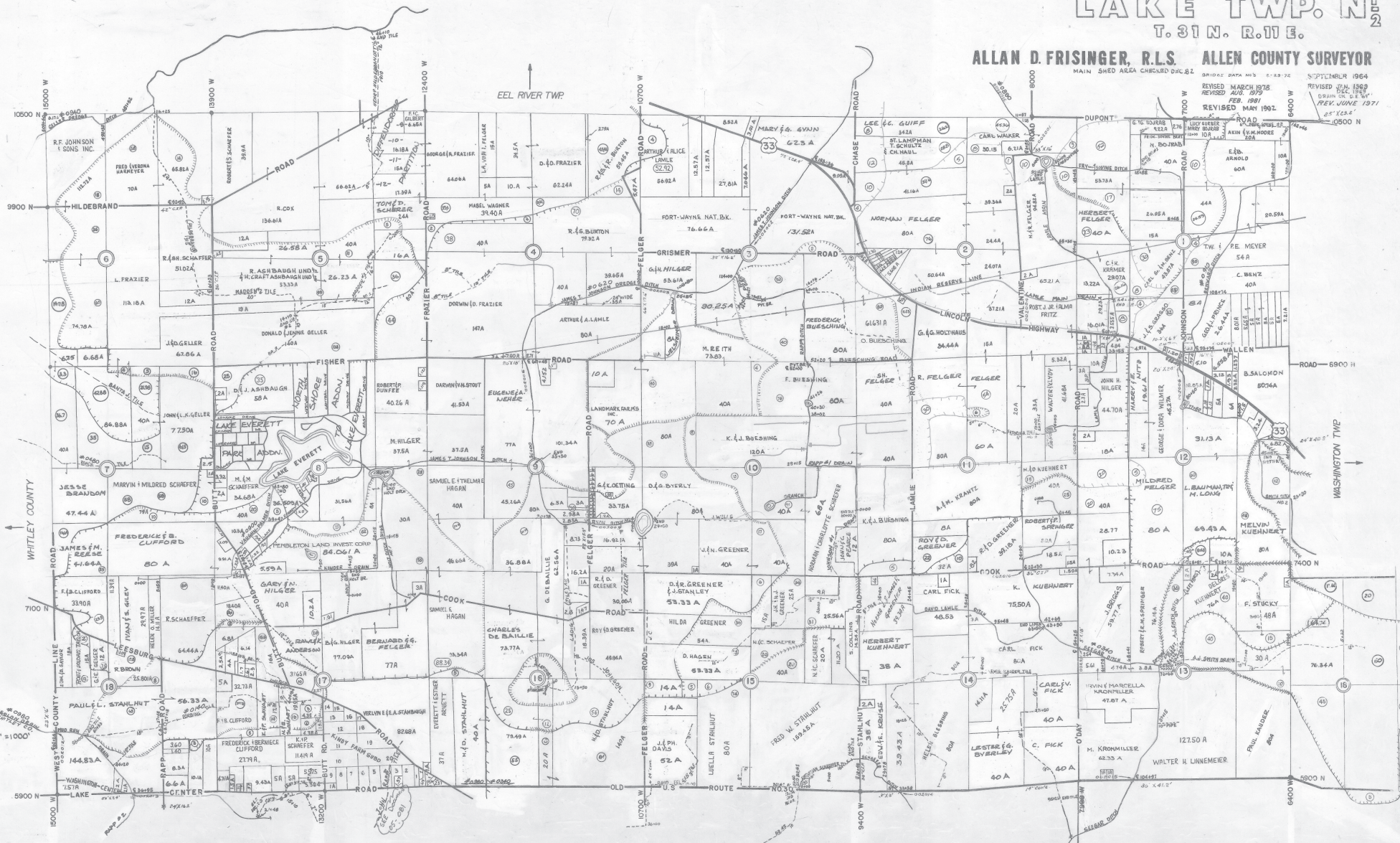
LAKE TWP. N1/2

T. 31 N. R. 11 E.

ALLAN D. FRISINGER, R.L.S. ALLEN COUNTY SURVEYOR

MAIN SHED AREA CHECKED DEC. 82 BRIDGE DATA HAS 6-29-76 SEPTEMBER 1964

REVISED MARCH 1978
REVISED AUG. 1979
FEB. 1981
REVISED MAY 1982
REVISED JAN. 1989
REV. JUNE 1991
65' X 65'



APPROX. SCALE 1" = 1000'