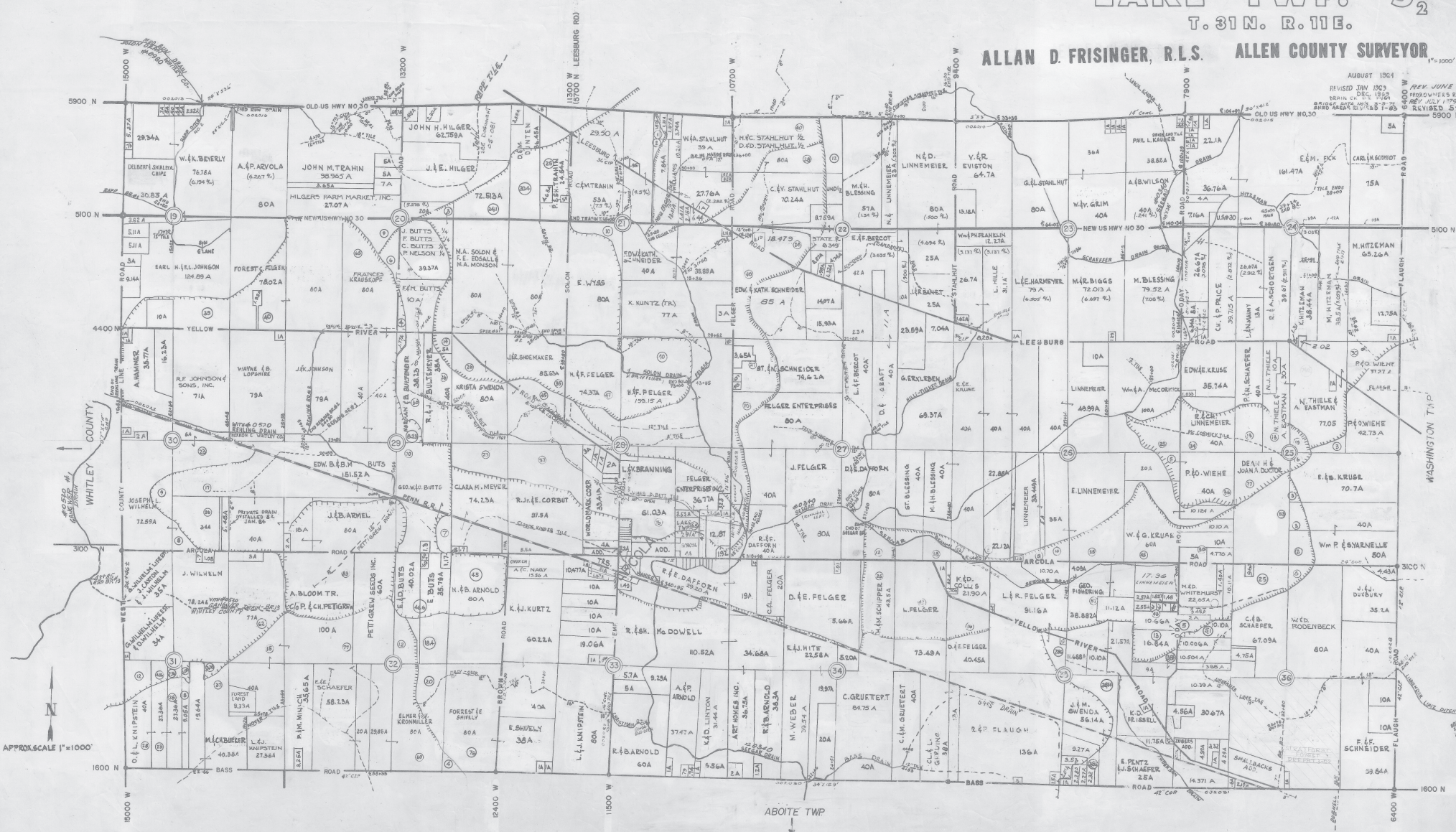


# LAKE TWP. S1/2 T. 31 N. R. 11 E.

ALLAN D. FRISINGER, R.L.S. ALLEN COUNTY SURVEYOR

AUGUST 1964  
REVISED TRM 1963  
DEAN C. DEC 1964  
REV. JUNE 1971  
REV. APR 1979  
REVISED 5-92  
5900 N



APPROX. SCALE 1"=1000'

ABOTE TWP