

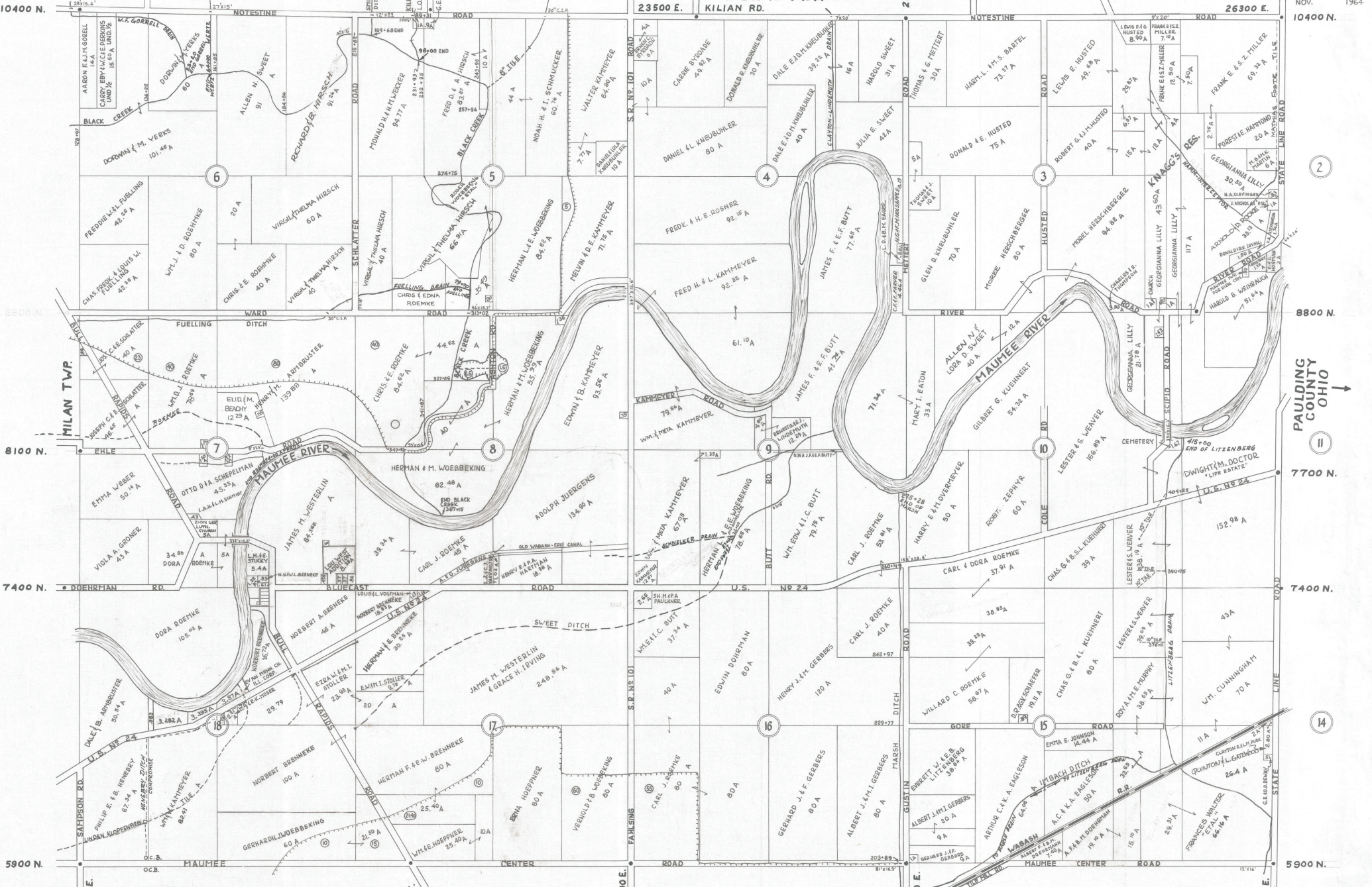
NORTH HALF MAUMEE TWP. N 1/2

T. 31 N., R. 15 E.
ALLEN COUNTY SURVEYOR

JUNE 1958
REVISED: FEBRUARY 1961
FEBRUARY 1962
NOV. 1964

LEON J. SMITH
SCIPIO TWP

SPRINGFIELD TWP



PAULING COUNTY OHIO