

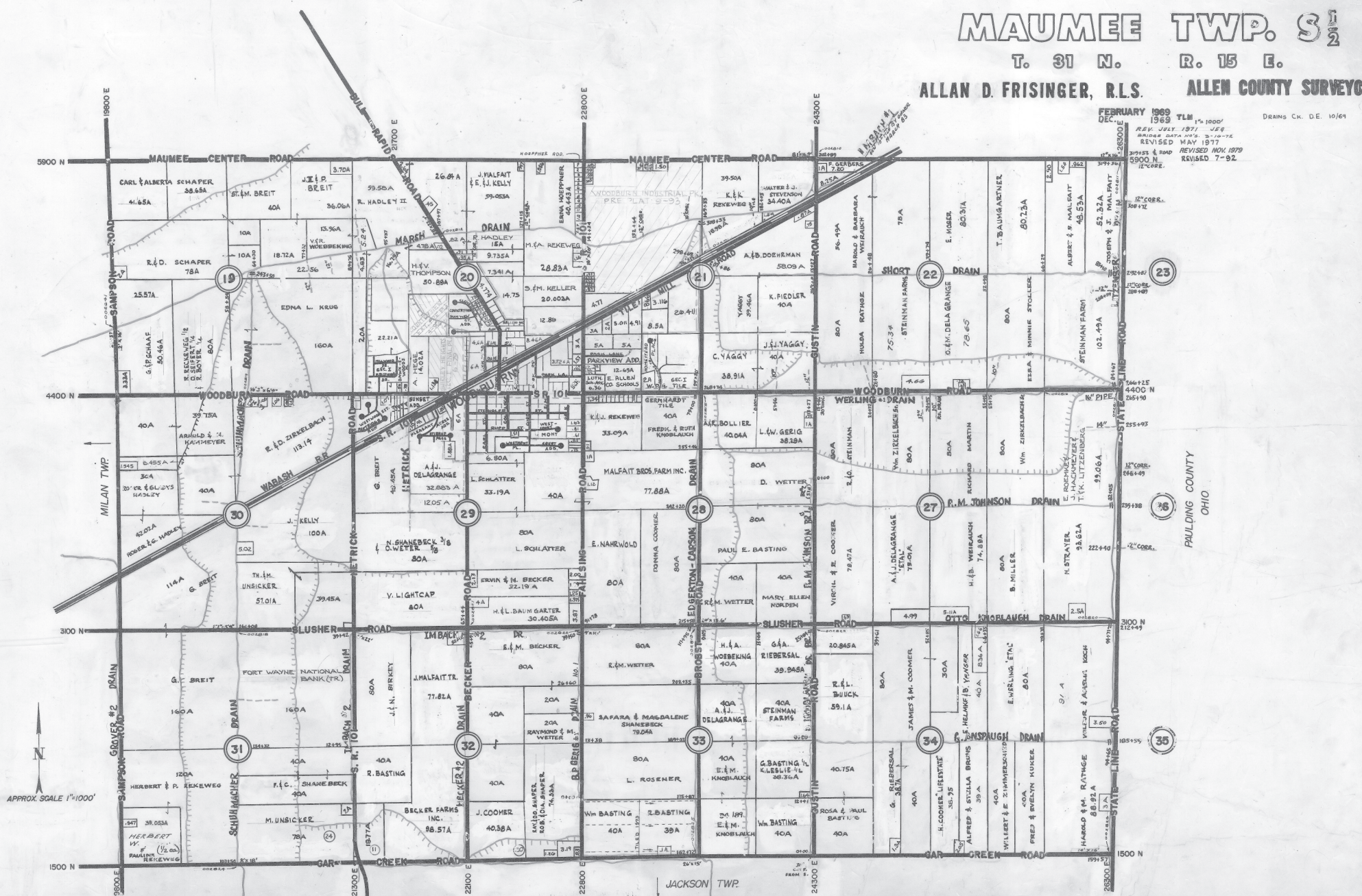
MAUMEE TWP. S 1/2

T. 31 N. R. 15 E.

ALLAN D. FRISINGER, R.L.S. ALLEN COUNTY SURVEYOR

FEBRUARY 1969 TLM 1"=1000'
DEC. 1969
REV. JULY 1971 V&P
BRIDGE DATA NOS. 3-10-72
REVISED MAY 1977
DRAIN & ROAD REVISED NOV 1979
5900 N 12" CORR.
REVISIONS 7-92

DRAINS C.K. D.E. 10/64



APPROX. SCALE 1"=1000'

PAULDING COUNTY OHIO