

MONROE TWP. N¹/₂

T.29N. R.15E.

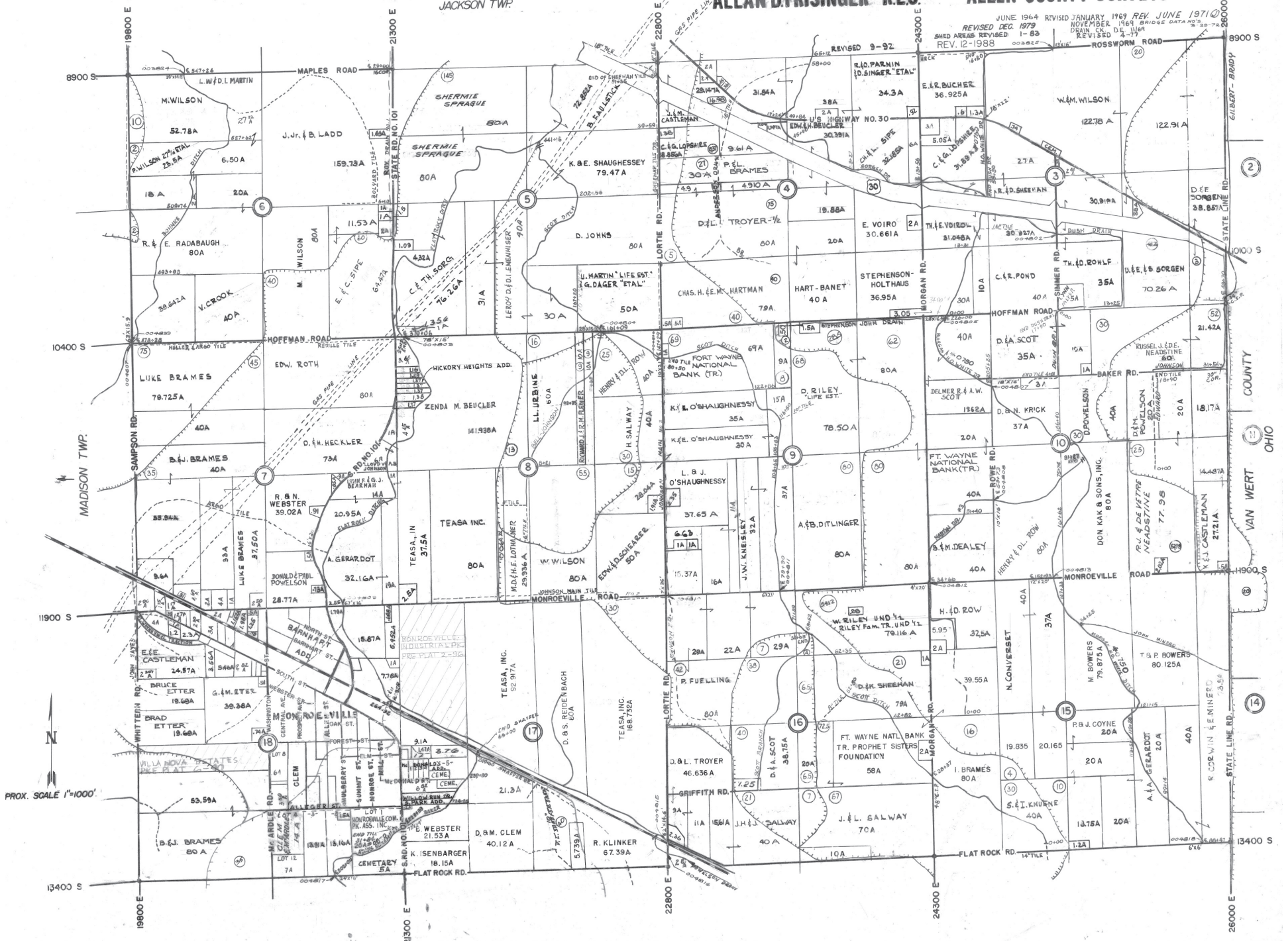
1"=1000'

ALLAN D. FRISINGER R.L.S.

ALLEN COUNTY SURVEYOR

JUNE 1964 REVISED JANUARY 1969 REV. JUNE 1971
REVISED DEC. 1979 NOVEMBER 1969 BRIDGE DATA
DRAIN CO. DE. LIVER REVISED 3-77
REV. 12-1988 000822

JACKSON TWP.



PROX. SCALE 1"=1000'

OHIO
VAN WERT COUNTY