

SOUTH HALF

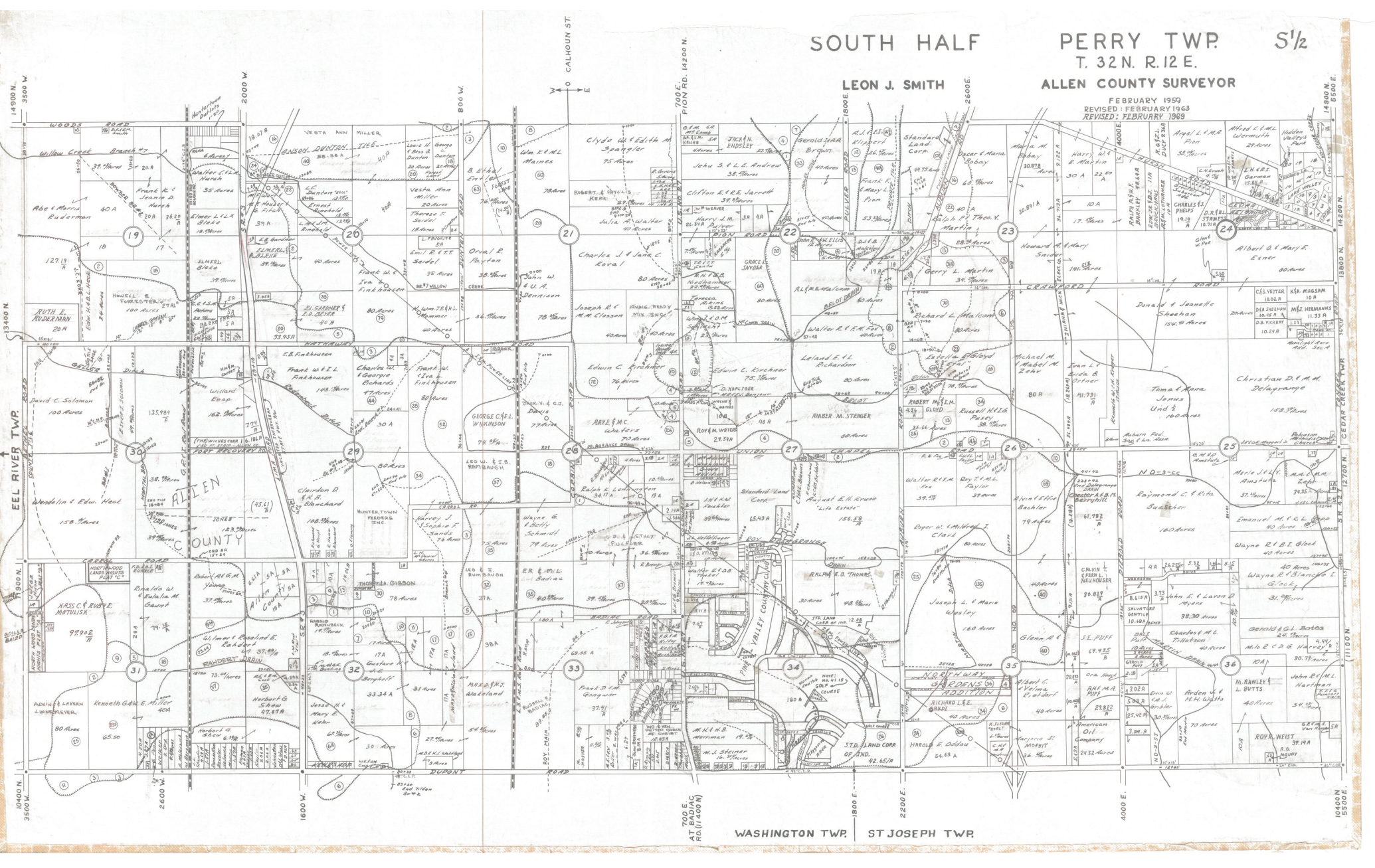
PERRY TWP.
T. 32 N. R. 12 E.

S 1/2

ALLEN COUNTY SURVEYOR

FEBRUARY 1959
REVISED: FEBRUARY 1963
REVISED: FEBRUARY 1969

LEON J. SMITH



EEL RIVER TWP.

CECILEE TWP.

14900 N.

13400 N.

18000 N.

16400 N.

3500 W.

2000 W.

2600 W.

2600 W.

2000 W.

2000 W.

2600 W.

2600 W.

800 W.

800 W.

800 W.

800 W.

700 E.
AT BADIAC
RD. (11400 N.)

700 E.

1800 E.

1800 E.

1800 E.

1800 E.

2600 E.

2600 E.

2600 E.

2600 E.

4000 E.

4000 E.

4000 E.

4000 E.

14900 N.

13400 N.

18000 N.

16400 N.

WASHINGTON TWP. ST JOSEPH TWP.