

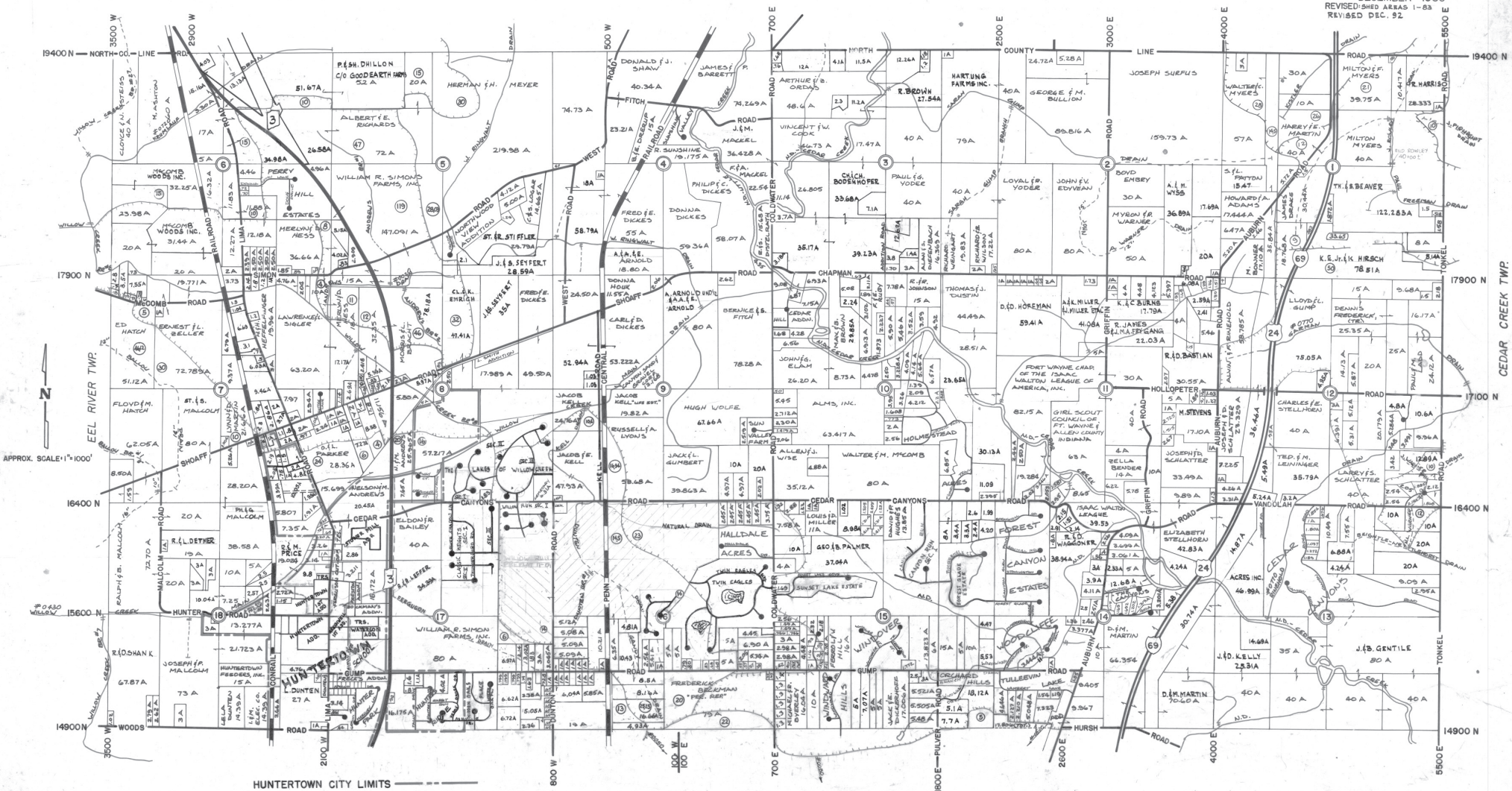
# PERRY TWP. N 1/2

T. 32 N., R. 12 E.

— ALLAN D. FRISINGER, R.L.S. ALLEN COUNTY SURVEYOR

DECEMBER 1980  
REVISED SHEET AREAS 1-83  
REVISED DEC. 92

DEKALB COUNTY



HUNTERTOWN CITY LIMITS