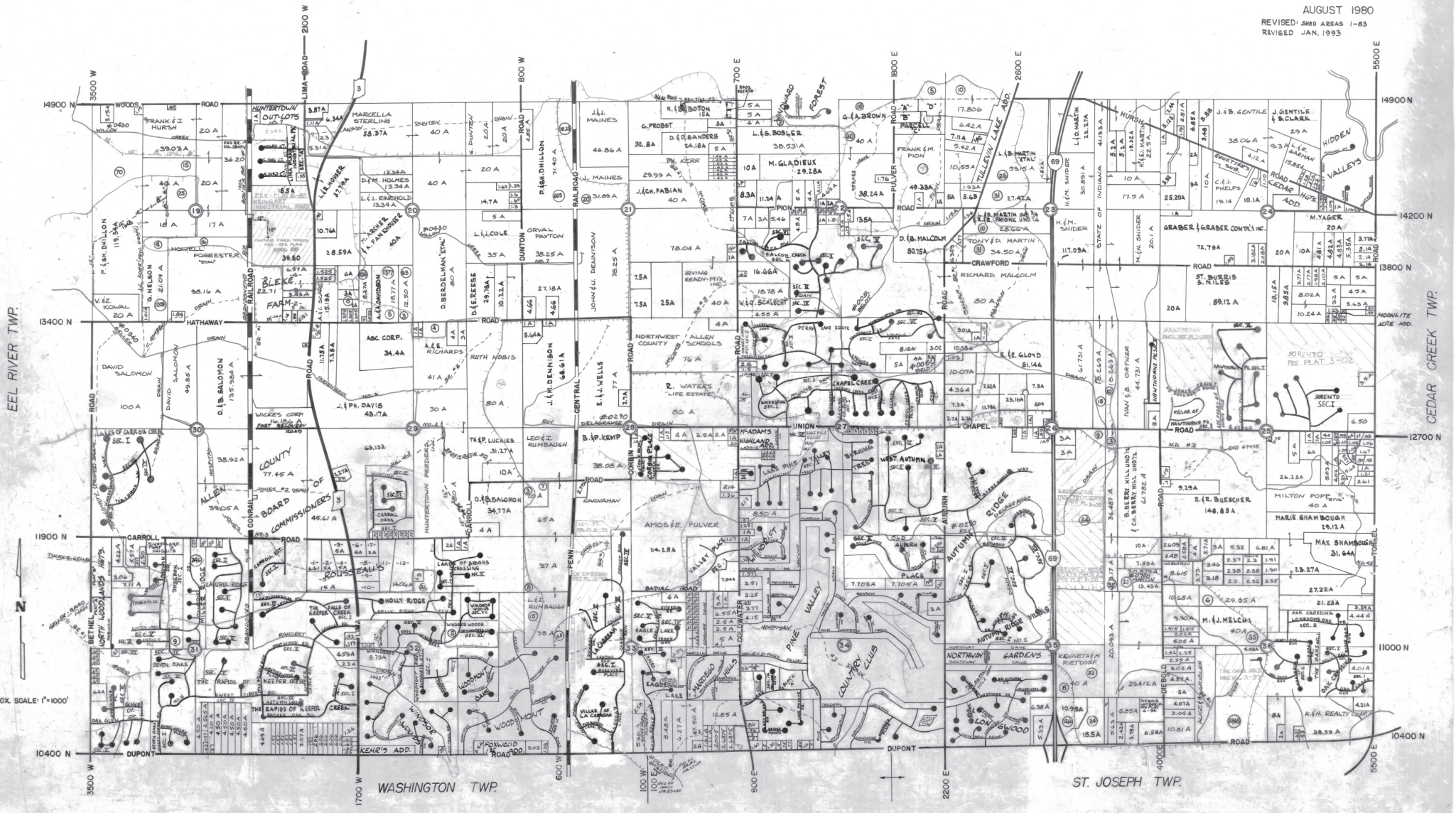


PERRY TWP. S₁/₂

T. 32 N., R. 12 E.

ALLAN D. FRISINGER, R.L.S. ALLEN COUNTY SURVEYOR

AUGUST 1980
REVISED 588 AREAS 1-83
REVISED JAN. 1993



EEL RIVER TWP.

CEDAR CREEK TWP.

WASHINGTON TWP

ST. JOSEPH TWP.

APPROX. SCALE: 1"=1000'