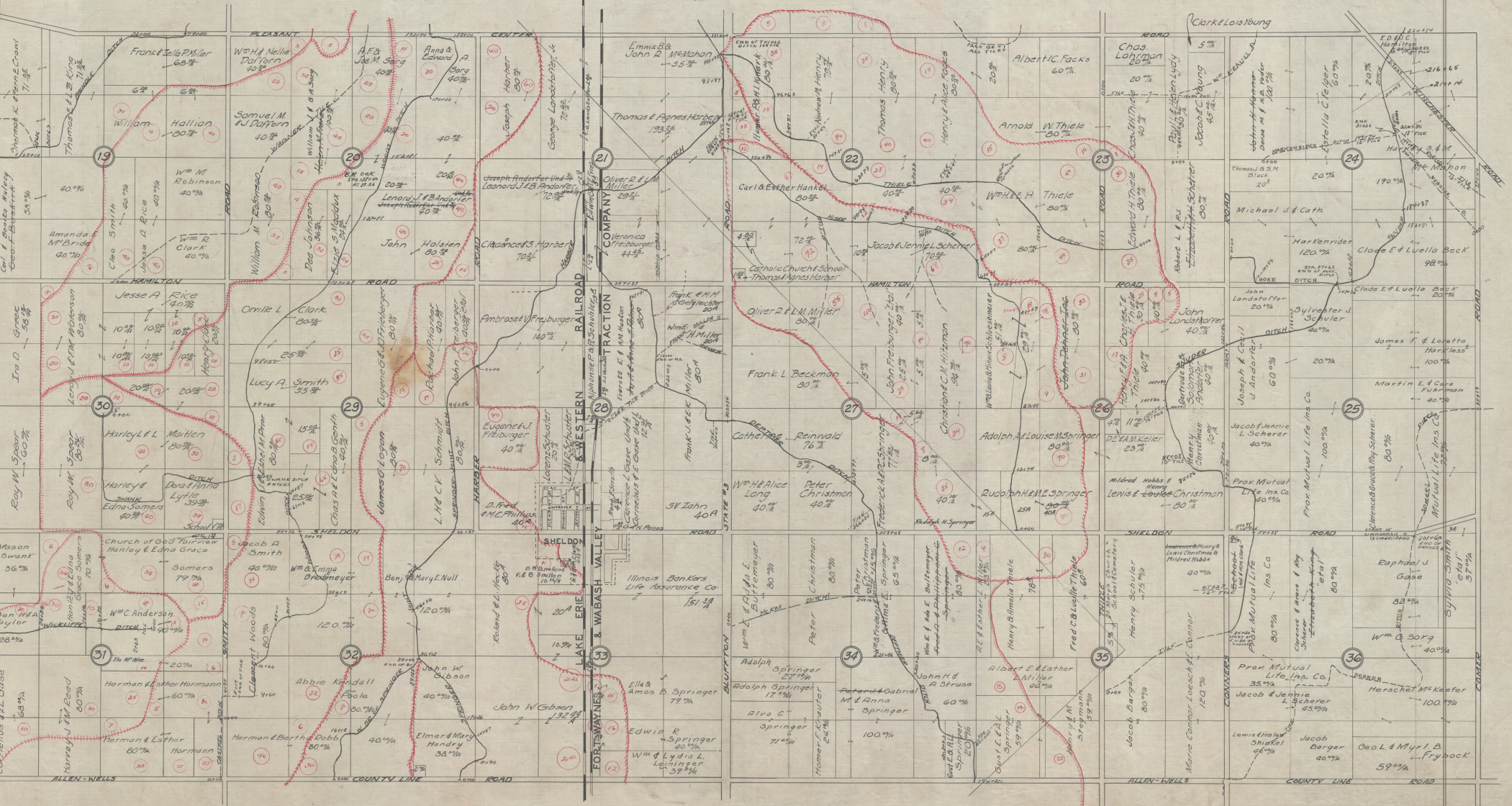


SOUTH HALF PLEASANT TWP

W. CARLISLE DUELL

SURVEYOR ALLEN COUNTY



19
Thomas & E. King 71%
Frank & Edna Miller 65%
William Hallion 80%
Wm M Robinson 40%
Amanda M. Bridg 40%
Cleo Smith 60%
Jesse A Rice 40%
Wm R Clark 40%

20
Samuel M Duffern 40%
Anna & Edward A Berg 40%
Joseph Lindorfer and Leonard J B Anderson 70%
John Holsten 90%
Lucy A Smith 55%
James C Logan 80%
L M C K Schmidt 80%

21
Emma B & John R McMahon 55%
Thomas & Agnes Harber 123%
Oliver R & L M Miller 29%
Veronica Freiburger 44%
Ambrose W Freiburger 140%
Eugene J Freiburger 40%
Lorenz Schuster 20%
L E L Schuster 20%

22
Henry & Alice Berg 100%
Arnold W Thiele 90%
Carl & Esther Hankel 80%
Jacob & Jennie Schetter 70%
Catholic Church School - Thomas Agnes Harber
John Landstoffer 40%
John Landstoffer 40%
John Landstoffer 40%

23
Albert C Facks 60%
Chas Langman 20%
Edward H Thiele 90%
Wm H H Thiele 80%
John Landstoffer 40%
John Landstoffer 40%
John Landstoffer 40%

24
Jacob C Langman 40%
Michael J & Cath
Harkerider 120%
Clode E & Luella Beck 98%
John Landstoffer 20%
Joseph & Cath U Anderson 60%
Jacob Jennie L Scherer 40%

25
John Landstoffer 20%
James F & Luella Hartless 100%
Martin E & Clara Fuhrman 40%
Joseph & Cath U Anderson 60%
Jacob Jennie L Scherer 40%
Prox Mutual Life Ins Co 100%
Prox Mutual Life Ins Co 100%

30
Gree D
Ira D
Roy M Spear 80%
Harley L L Mathen 80%
Harley & Edna Somers 40%
Church of God Fairview Hanley & Edna Grace
Somers 79%
Wm C Anderson 80%

29
Orville L Clark 80%
Eugene J Freiburger 80%
John Freiseger 40%
James C Logan 80%
L M C K Schmidt 80%
Benj & Mary L Null 120%
John W Gibson 120%
John W Gibson 120%

28
Frank L Beckman 80%
John Freiseger 40%
Frank J Reek Miller 80%
Catharina Renwald 76%
Peter Christian 40%
Frederick A & E Springer 65%
Wm E & A Bultemeyer 80%
Adolph Springer 27%
Adolph Springer 17%
Alvo C Springer 71%
Homer E Kauter 24%

27
John Freiseger 40%
Frank L Beckman 80%
Catharina Renwald 76%
Peter Christian 40%
Frederick A & E Springer 65%
Wm E & A Bultemeyer 80%
Adolph Springer 27%
Adolph Springer 17%
Alvo C Springer 71%
Homer E Kauter 24%

26
John Landstoffer 40%
John Landstoffer 40%
John Landstoffer 40%
John Landstoffer 40%
John Landstoffer 40%
John Landstoffer 40%
John Landstoffer 40%

26
John Landstoffer 40%
John Landstoffer 40%
John Landstoffer 40%
John Landstoffer 40%
John Landstoffer 40%
John Landstoffer 40%
John Landstoffer 40%

25
John Landstoffer 20%
James F & Luella Hartless 100%
Martin E & Clara Fuhrman 40%
Joseph & Cath U Anderson 60%
Jacob Jennie L Scherer 40%
Prox Mutual Life Ins Co 100%
Prox Mutual Life Ins Co 100%

31
Roy M Spear 80%
Harley L L Mathen 80%
Harley & Edna Somers 40%
Church of God Fairview Hanley & Edna Grace
Somers 79%
Wm C Anderson 80%

32
Orville L Clark 80%
Eugene J Freiburger 80%
John Freiseger 40%
James C Logan 80%
L M C K Schmidt 80%
Benj & Mary L Null 120%
John W Gibson 120%
John W Gibson 120%

33
Frank L Beckman 80%
John Freiseger 40%
Frank J Reek Miller 80%
Catharina Renwald 76%
Peter Christian 40%
Frederick A & E Springer 65%
Wm E & A Bultemeyer 80%
Adolph Springer 27%
Adolph Springer 17%
Alvo C Springer 71%
Homer E Kauter 24%

34
John Landstoffer 40%
John Landstoffer 40%
John Landstoffer 40%
John Landstoffer 40%
John Landstoffer 40%
John Landstoffer 40%

35
John Landstoffer 40%
John Landstoffer 40%
John Landstoffer 40%
John Landstoffer 40%
John Landstoffer 40%
John Landstoffer 40%

35
John Landstoffer 40%
John Landstoffer 40%
John Landstoffer 40%
John Landstoffer 40%
John Landstoffer 40%
John Landstoffer 40%

36
John Landstoffer 20%
James F & Luella Hartless 100%
Martin E & Clara Fuhrman 40%
Joseph & Cath U Anderson 60%
Jacob Jennie L Scherer 40%
Prox Mutual Life Ins Co 100%
Prox Mutual Life Ins Co 100%

31
Roy M Spear 80%
Harley L L Mathen 80%
Harley & Edna Somers 40%
Church of God Fairview Hanley & Edna Grace
Somers 79%
Wm C Anderson 80%

32
Orville L Clark 80%
Eugene J Freiburger 80%
John Freiseger 40%
James C Logan 80%
L M C K Schmidt 80%
Benj & Mary L Null 120%
John W Gibson 120%
John W Gibson 120%

33
Frank L Beckman 80%
John Freiseger 40%
Frank J Reek Miller 80%
Catharina Renwald 76%
Peter Christian 40%
Frederick A & E Springer 65%
Wm E & A Bultemeyer 80%
Adolph Springer 27%
Adolph Springer 17%
Alvo C Springer 71%
Homer E Kauter 24%

34
John Landstoffer 40%
John Landstoffer 40%
John Landstoffer 40%
John Landstoffer 40%
John Landstoffer 40%

35
John Landstoffer 40%
John Landstoffer 40%
John Landstoffer 40%
John Landstoffer 40%
John Landstoffer 40%

35
John Landstoffer 40%
John Landstoffer 40%
John Landstoffer 40%
John Landstoffer 40%
John Landstoffer 40%

36
John Landstoffer 20%
James F & Luella Hartless 100%
Martin E & Clara Fuhrman 40%
Joseph & Cath U Anderson 60%
Jacob Jennie L Scherer 40%
Prox Mutual Life Ins Co 100%
Prox Mutual Life Ins Co 100%

31
Roy M Spear 80%
Harley L L Mathen 80%
Harley & Edna Somers 40%
Church of God Fairview Hanley & Edna Grace
Somers 79%
Wm C Anderson 80%

32
Orville L Clark 80%
Eugene J Freiburger 80%
John Freiseger 40%
James C Logan 80%
L M C K Schmidt 80%
Benj & Mary L Null 120%
John W Gibson 120%
John W Gibson 120%

33
Frank L Beckman 80%
John Freiseger 40%
Frank J Reek Miller 80%
Catharina Renwald 76%
Peter Christian 40%
Frederick A & E Springer 65%
Wm E & A Bultemeyer 80%
Adolph Springer 27%
Adolph Springer 17%
Alvo C Springer 71%
Homer E Kauter 24%

34
John Landstoffer 40%
John Landstoffer 40%
John Landstoffer 40%
John Landstoffer 40%
John Landstoffer 40%

35
John Landstoffer 40%
John Landstoffer 40%
John Landstoffer 40%
John Landstoffer 40%
John Landstoffer 40%

35
John Landstoffer 40%
John Landstoffer 40%
John Landstoffer 40%
John Landstoffer 40%
John Landstoffer 40%

36
John Landstoffer 20%
James F & Luella Hartless 100%
Martin E & Clara Fuhrman 40%
Joseph & Cath U Anderson 60%
Jacob Jennie L Scherer 40%
Prox Mutual Life Ins Co 100%
Prox Mutual Life Ins Co 100%