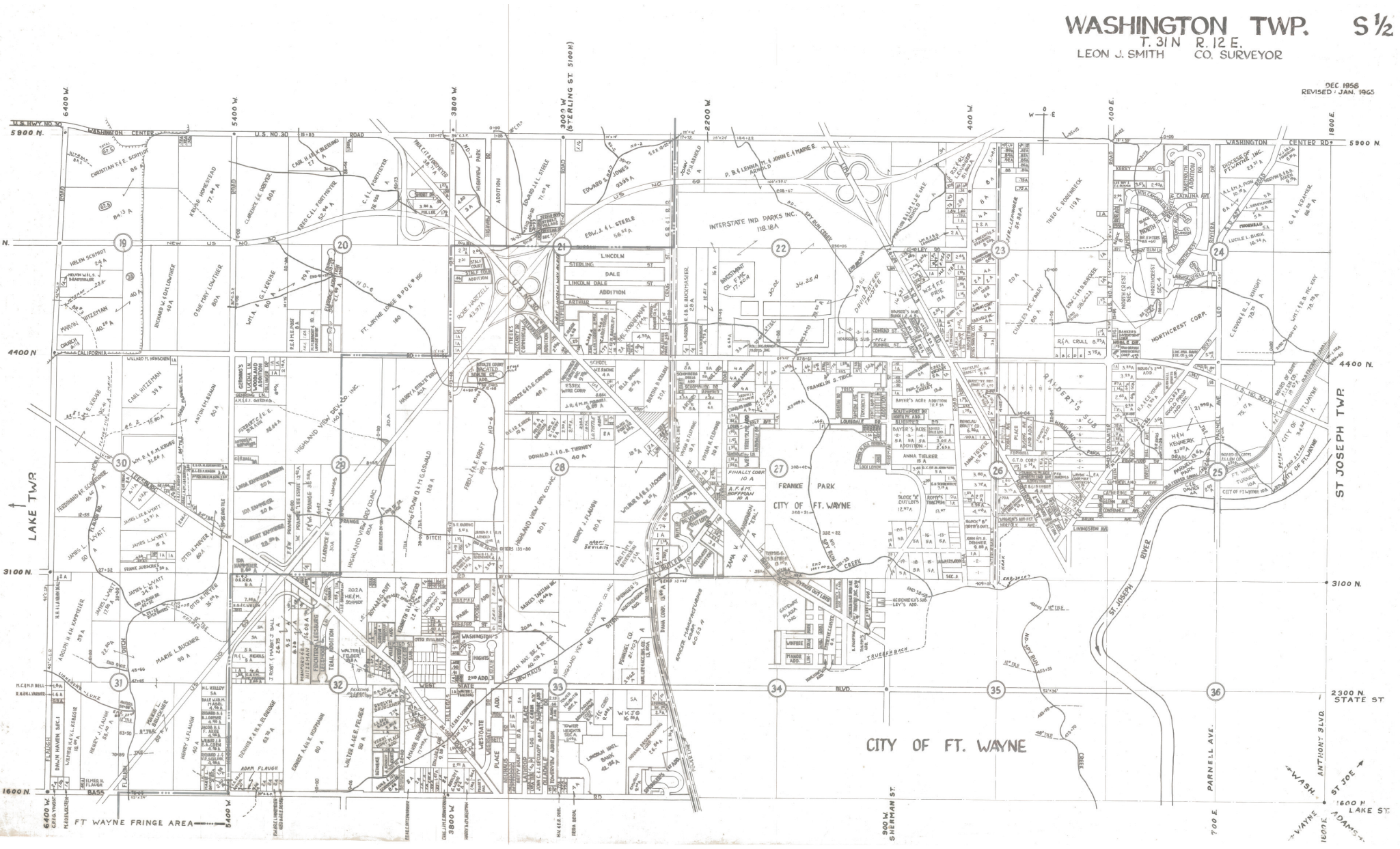


WASHINGTON TWP. S 1/2
T. 31 N. R. 12 E.
LEON J. SMITH CO. SURVEYOR

DEC 1956
REVISED - JAN. 1965



CITY OF FT. WAYNE

2300 N. STATE ST

1600 N. LAKE ST

1800 N. ADAMS ST

1600 N. VAYNE ST

1800 N. WASH. ST

1600 N. ANTHONY BLVD.

1800 N. ST. JOE ST

1600 N. LAKE ST

1800 N. ADAMS ST

1600 N. VAYNE ST

1800 N. WASH. ST